

PROtronic TopLINE

Article-No.: 1011931

Variant EMU (Engine Management Unit)



PROtronic TopLINE – The All-rounder for production-oriented Rapid Control Prototyping.

The innovative dual processor architecture in combination with flexibly configurable FPGA technology and powerful communication interfaces gives users a completely new range of freedom – and that is all in a compact and robust unit

Basic System	
Operating Voltage:	6.5 V ... 32 V DC
Temperature Range:	-40 °C ... +75 °C case temperature
Electrical Strength:	Short-circuit against Ground and V _{Bat} for all power supply terminals Power switches are also protected against overload
Mechanical Stress:	Vibration and temperature testing according to DIN ISO 16750-3 Part 4.1.3.1.5.2, DIN EN 60068-2-64
IP code (EN 60529):	IP64K
EMV Stability:	Interference emission/reception tests, CE conformal
External Connector:	2 x 70-pin (AMP) 1 x 5-pin (ODU) 3 x 10-pin (ODU)
Housing:	Aluminium, (W x H x L) 281 mm x 86 mm x 250 mm
Weight:	Approx. 6 kg

Dual-Processor Module	
Main Processor:	NXP MPC8544 (@1 GHz) <ul style="list-style-type: none"> ■ 256 KByte level 2 cache ■ double precision Floating-Point-Unit
Memory:	Flash: 64 MByte RAM: 256 MByte EEPROM: 32 KByte
Co-Processor:	IBM PPC440 (@400 MHz)
Memory:	Flash: 32 MByte DDR2-RAM: 32 MByte SRAM: 4 MByte EEPROM: 256 kbit
FPGA:	Virtex5 including 71,680 Logic Cells
Timer:	Wake-up via user configurable timer
Watchdog:	Watchdog for system monitoring

For further information and a current price list, please contact us at: info@schaeffler-engineering.com

Schaeffler Engineering GmbH

Gewerbestrasse 14
58791 Werdohl
Tel: +49 2392 809-0
Fax: +49 2392 809-101
E-Mail: Info@schaeffler-engineering.com
Internet: www.schaeffler-engineering.com

Every care has been taken to ensure the correctness of the information contained in this publication but no liability can be accepted for any errors or omissions.

We reserve the right to make technical changes.

© Schaeffler Engineering GmbH

Issued: 2017, August

This publication or parts thereof may not be reproduced without our permission.

Communication Interfaces	
Measurement- & Calibration System:	1 x 10/100 Mbit/s Ethernet, galvanically isolated up to 1500 Vrms, fully compliant to standard-Ethernet-Network
Protocol:	XCP on TCP/IP, XCP on UDP/IP
IP-Address Distribution:	Manually or via DHCP
CAN:	3 x CAN 2.0B Full-CAN (High-Speed, 1 MBaud max./ISO DIS 11898) Alternative ³⁾ 2 x ISO DIS 11898 and 1 x ISO DIS 11992 possible, 1 x CAN 2.0B Full-CAN (High-Speed, 1 MBaud max./ISO DIS 11898) wake-up capability
FlexRay (available as an option):	1 x FlexRay (2 channels) according to protocol specification 2.1, <ul style="list-style-type: none"> ▪ Freescale MFR4310 Communication Controller ▪ Software switchable termination ▪ Feed-through support to avoid stubs (if termination is not activated)
LIN ²⁾ :	2 x LIN, according to LIN specification 1.3, 2.0, 2.1, 2.2 Configurable as LIN-Master or LIN-Slave
Automotive Ethernet ⁵⁾ :	2 x BroadR-Reach [®] Ethernet
SENT ⁶⁾ :	6 x SENT, according to SENT specification SAE J2716 Configurable in groups of 3 as SENT-Master or SENT-Slave

The following interfaces are supported by hardware, but currently not supported by software

LVDS ¹⁾ :	2 x 250 Mbit/s LVDS (low voltage differential signal) with dual ported memory
----------------------	--

Analog Inputs

Number:	24, 4 groups each with 6 channels Standard hardware set-up: 6 x: U = 0 ... 10.14 V, fc = 14 kHz, typical application: load amplifier, pressure sensor 2 x: U = 0 ... 10.14 V, fc = 1.4 kHz, typical application: pressure sensor, active sensors 6 x: U = 0 ... 5.07 V, fc = 0.7 kHz, typical application: pressure sensor, active sensors 6 x: U = 0 ... 5.07 V, fc = 0.7 kHz, typical application: temperature sensor 4 x: U = 0 ... 5.07 V, fc = 0.7 kHz, typical application: potentiometer, positional sensor
Resolution:	12 Bit
Input Voltage:	Uni-polar or bi-polar (depending on hardware set-up)
Input Filter (analog):	Low-pass 1st order, cut-off frequency can be set via hardware set-up
Input Filter (digital):	Low-pass 1st order, cut-off frequency configurable
Dynamic Behaviour:	Sampling rate per channel: > 100 kHz
Signal Types:	<ul style="list-style-type: none"> ▪ Analog input ▪ Digital input (with programmable threshold and hysteresis)
Sensor Supply:	Per group: 0 V ... VBat / 100 mA

Analog Outputs, alternative³⁾ to Analog Input Group 4	
Number:	6, one group with 6 channels
Resolution:	12 Bit
Output Voltage:	0 ... 10 V/max. 10 mA
Dynamic Behaviour:	Update rate: 70 kHz

Lambda/Knock Inputs	
Number:	Broadband sensors: 2 x Two-state sensors: 2 x Knock sensors: 4 in asymmetrical operation, alternatively ³⁾ 2 in symmetrical operation
Dynamic Behaviour:	Sampling rate per channel: > 100 kHz
Alternatively ³⁾ , the lambda/knock inputs are also configurable as analog inputs (up to 8 channels)	
Resolution: 12 Bit.	

Crankshaft Inputs	
Number:	2 x hall sensor input: measurement range 0 ... 5.06 V, $f_c = 66$ kHz 2 x inductive sensor input: measurement range -29.9 ... + 29.9 V, $f_c = 16$ kHz Common sensor voltage Further inputs for processing of crank circuit signals available for fast digital inputs / outputs.
Operating Range:	Engine speed 50 ... 12000 rpm ⁴⁾
Crankshaft Tooth System:	Configurable, 36 – 3600 teeth with 1 to 4 gaps or one additional tooth, e.g. 36±1, 60-(1...4), 60-1-1 (symmetrically), 360 increments / revs, 3600 increments / revs, etc.
Camshaft Tooth System:	Configurable, 1 to 15 teeth
Resolution:	0.1 °KW
Sensor Type:	Inductive or hall
Dynamic Behavior:	Sampling rate per channel: 500 kHz
Sensor Supply:	0 V ... V_{Bat} /100 mA

Fast Digital Inputs / Outputs	
Number:	12, 2 groups each with 6 channels, in groups as input / output configurable
Input:	5 ... 32 V, threshold configurable group-wise Standard equipment: 24.8 k Ω , pull-down
Output:	Push/pull output 75 Ω
Input signal types:	<ul style="list-style-type: none"> ▪ Digital input ▪ Pulse and frequency measurement input ▪ Event generation at edge change input
Output signal types:	<ul style="list-style-type: none"> ▪ Digital output ▪ PWM output

Power Switch Outputs	
Number:	24, 4 groups with 6 channels each
Supply:	Per group, 6.5 ... 52 V external
Output:	Push/pull, low side or high side output 5 A, 11 A peak Parallel switching of up to 6 channels possible Load capacity of supply: max. 20 A per group
Signal Types:	<ul style="list-style-type: none"> ■ Digital output ■ PWM output, 20 Hz ... 10 kHz ■ Full bridge output, 20 Hz ... 10 kHz ■ Peak & Hold output, 20 Hz ...10 kHz ■ Peak & Hold current measurement ■ Pulse output (angle-synchronous) ■ Ignition output (control of external power stages), max. 20 ms ■ Current controlled output

Injection Valve Outputs	
Number:	6, 3 groups with 2 channels each
Supply:	Internal
Output:	Highside – Lowside configuration V_{Bat} and variable boost-voltage, max. 30 A control of electromagnetic valves (Peak & Hold)
Boost Power Supply:	Variable boost voltage from $V_{Bat} + 3$ V to 80 V 60 W, temporary max. 30 A at 80 V boost voltage
Signal Types:	Injection Valve Control

Ignition Outputs	
Number:	6, one group with 6 channels for control of external ignition power stages Diagnosis functions of external ignition power stage
Output:	0 ... 4.6 V, push/pull voltage output or 8 ... 25 mA power output, max. 16 V
Signal Types:	Ignition Control

¹⁾ Only supported by hardware, currently not supported by software.

²⁾ Additional software required (LIN ACI-Blockset).

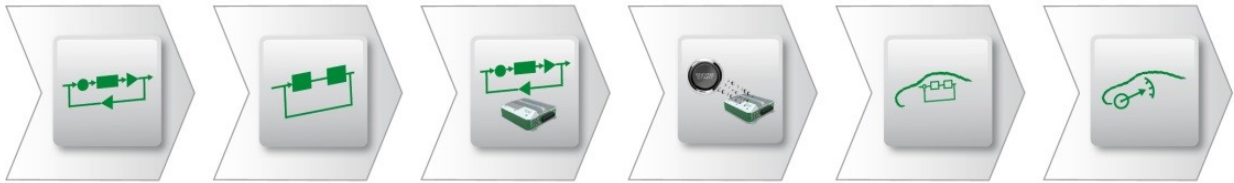
³⁾ Not included in standard version.

⁴⁾ For incremental sensors, a lower maximum rev. speed applies depending on the number of teeth.

⁵⁾ Can be used only as Bypass-Master interface. Additional software required (Bypass ACI-Blockset).

⁶⁾ While using the SENT interface the fast digital I/O groups will be reduced by one.

Development Environment



Smooth transition from design to mass production

The development environment of the **PROtronic TopLINE** is based on tools that are widespread in the automotive industry. It not only offers free scope when choosing the code generator but also for measurement and calibration tools.

1 Model-based software development

- Graphical modeling of control functions with MATLAB®, Simulink® and Stateflow®.

2 Offline simulation

- Testing and optimisation of the functional design against a plant design using offline simulation on the PC with MATLAB®, Simulink® and Stateflow®.

3 Hardware mapping

- Mapping and configuration of the control functions in the model to the inputs and outputs of the hardware using a graphic block library based on Simulink® – Application Controller Interface (ACI).

4 Automatic code generation

- Generation of highly efficient production code at the press of a button, alternatively with the code generators TargetLink® or Embedded Coder™.

5 Test and verification

- Downloading the generated software to the control unit with Schaeffler Engineering boot loader tool.
- Testing and verification of the new developed control functions on a test-stand, in the vehicle or via hardware-in-the-loop simulation.

6 Measurement and calibration

- Fine tuning and measurement of the control functions using a measurement and calibration tool, alternatively with **MARC I**, INCA or CANape.